

CANADIAN

OCTOBER 2012

A Chef's Best  
Thanksgiving Dinner

# HOUSE & HOME

CANADA'S MAGAZINE OF HOME & STYLE

## *Fresh* Fall Looks

RUSTIC STYLE, DRAMATIC ACCENTS, STATEMENT LIGHTING AND MORE

**TREND ALERT:**

*Decorate with Plum*

**EXCLUSIVE!  
LYNDA REEVES'  
LATEST  
SHOWHOUSE**

**FAST FIX:  
SUZANNE  
DIMMA'S  
BATHROOM  
REFRESH**

*Plus!*  
**OUR ESSENTIAL  
RUG GUIDE**

Display Until October 8 \$5.99



www.houseandhome.com

# A Winning

# Mix

WITH ITS BLEND OF MODERN AND TRADITIONAL, THIS YEAR'S SHOWHOUSE UPDATES THE ENDURING IMAGE OF A DREAM HOME. KELVIN BROWNE GETS THE SCOOP FROM LYNDA REEVES.

raphy by MICHAEL GRAYDON

LEFT: The symmetrical kitchen is anchored by a dramatic, ceiling-height Bianco Carrara marble backsplash. Marble, embellished with traditional recessed panels, also wraps around the back and sides of the island. **Cabinets,** Ikea; **marble,** Ciot; **sinks,** Ginger's; **faucets,** pot filler,

**Hansgrohe;** **vase,** black **platter,** Pottery Barn; **wood platter,** L'Atelier; **white plates,** Home Outfitters and Indigo. **BELOW:** The house sits on a leafy corner lot in Oakville, Ont. **Construction,** PCM; **landscaping,** Coivic Contracting.



**KELVIN:** This is the sixth showhouse you've created for the Princess Margaret Hospital fall lottery. I know you don't want to repeat yourself, so where do you begin?

**LYNDA:** It's crucial that a house has a sense of place and fits into its neighbourhood. At the same time, we can't just offer a traditional home. We want to surprise people by showing them something new. After all, it's a showhouse. These homes are a fantasy, which we build in collaboration with our architectural designer, Ray Murakami, so they need to thrill our visitors. This year, we combined a classic stone farmhouse — the kind of vernacular you find in the area — with striking modern elements like black doors and windows, and a dark grey metal roof. The result is a true Canadian dream home.

**KB:** Who were the designers involved?

**LR:** I conveyed my concept for the house to Ray Murakami, who did a wonderful job bringing it to life. The structure is Ray's design; the interiors, detailing and decorating are by my firm, LR Design Studio, which includes designers Maia Roffey and Jenna Cadieux.

**KB:** You're very aware of what people are looking for in a home. What are the must-haves?

**LR:** A soaring main space appeals to everyone, and we wanted one in this house. A good relationship between inside and out is also essential. We have a glass wall by NanaWall that's an extension of the living room and can completely open to connect the main space to the garden. And we've returned to the concept of a live-in kitchen, because it's what families want. It's really a multitasking area where everyone can be together.

**KB:** Some say they don't like modern homes, but feel an authentic traditional house is too dark and divided. This house is deceptive, because it makes you think you're getting traditional, but it has a real contemporary spirit.

RIGHT: The home's architectural designer, Ray Murakami of Toronto's Murakami Design. **Armchair**, Elizabeth Interiors; **floor lamp**, CB2. BELOW: The two-storey ceiling in the great room gives the space an airy feeling. A limestone fireplace provides a rustic focal point, while the Ralph Lauren sofa is upholstered in white linen with a tufted bench seat. It's offset with a handcrafted coffee table that preserves the wood's organic edge. **Hardwood floors** (throughout), Moncer; **fireplace stone**, Mason's Masonry; **sofa**, armchairs, Elizabeth Interiors; **upholstery fabric**, Designer Fabrics; **coffee table**, Michel Zelnik; **rug**, poufs, bench, West Elm; **floor lamps**, CB2; **sphere**, Teatro Verde; **drape fabric**, Kravet; **drape hardware**, Dynamic Iron.



The kitchen includes a comfortable gathering space. A TV mounted on an easel can be repositioned for better viewing. Invisible speakers installed behind the walls are wired to the home's sound system and round out the media offering. **Sofa**, Stacaro; **chairs**, easel, Elizabeth Interiors; **chair fabric**, Designer Fabrics; **bench** (used as a coffee table), West Elm; **floor lamps**, Pottery Barn; **TV**, LG; **Amina invisible speakers**, Radiant Audio Design.



Photography by Leslie Williams (Murakami portrait)



**LR:** People often think of modern as cold or minimal — that they'll be constrained in the way they can live and what furniture they can have. But, if you think of the modernist qualities of light and openness, and how much we all desire those qualities, then in many ways we all want "modern." Even the most conservative visitors will respond to the fresh, airy feeling you get when you walk into this house.

**KB:** But the traditional moments are there, too, welcoming visitors like an old friend.

**LR:** Certainly. The floor plan is based on a classic centre-hall layout. There's a servery distinct from the kitchen. The second floor has a snug under-the-eaves quality. And the garage is separate from the house with an arbour joining it to the mudroom. The

*"You know this isn't a typical house when you enter.... The kitchen is decidedly untraditional"*

contrast that makes these things come alive is achieved by adding elements such as the full-length windows and the industrial black metal-frame doors — the glass-front door, in particular, really says "modern." You know this isn't a typical house when you enter. The newel post has a postmodern flatness to it. The kitchen is decidedly untraditional, with black lower cabinets and no uppers. There are fridge drawers in the island, while a full-height fridge is reserved for the servery. The Swedish oiled-oak floors that flow through the house give lightness and a modern feel. And the lower level has

CONTINUED ON PAGE 212



A freestanding modular unit by Grange was custom-stained to match the kitchen's lower cabinets and hardwired with potlights. It provides ample display space for serving pieces, as well as closed storage. **Wall unit**, Grange; **refinishing**, House Art; **white dishes**, Home Outfitters and Indigo.

TOP LEFT: The working side of the kitchen island is faced with stainless steel and holds two fridge drawers, a microwave drawer and a dishwasher. **Refrigerator drawers**, Jenn-Air; **dishwasher**, Scholtès; **microwave drawer**, Sharp.

TOP RIGHT: The Aga Total Control electric cooker hides digital touch-control technology behind an old world cast-iron façade. The cabinets, by Ikea, are built out to sit flush with the cooker

and create extra-deep counters. **Marble counters**, Ciot; **cabinet hardware**, Upper Canada Specialty Hardware; **pot filler**, Hansgrohe. LEFT CENTRE: A casual eating area in the kitchen builds on the room's black and white scheme. **Table**, Elte; **chairs**, UpCountry. RIGHT CENTRE: **Vase**, Pottery Barn.



Sleek, industrial black metal and glass doors lead to the study, echoing those that define the front entry. Floating reclaimed-wood shelves, visible just beyond, provide a rustic counterpoint. **Folding glass doors**, NanaWall; **steel and glass door**, Bliss Nor-Am Doors & Windows; **flooring**, Moncer; **console**, Crate & Barrel; **artwork** by Karen Whyllie, Art Interiors.



*“In the study, rough-hewn shelves give the flavour of an original farmhouse”*



Bold colour separates the main-floor study from the home's overall neutral palette. Pillows in a mix of ikat silks decorate a blue linen sectional from Crate & Barrel. **Upholstery fabric, armchairs**, Cocoon Furnishings; **coffee table**, Hallace Cluny; **floor lamps**, Pottery Barn; **pillow fabrics**, Lee Jofa; **fireplace insert**, Hearth Manor/Town & Country; **TV**, LG; **reclaimed-wood shelves**, Bored Barn; **drape fabric**, Designer Fabrics; **drape hardware**, Dynamic Iron; **speakers**, Sonos. OPPOSITE, TOP LEFT: Formal and casual elements combine for an elegant but laidback dining room. Slipcovered armchairs and side chairs upholstered in smoky blue linen surround the table. An industrial chandelier adds edge. **Table**, slipcovered **end chairs**, Boo

Boo & Lefty; **side chairs, chandelier**, Cocoon Furnishings; **artwork** by Elisha Leventis, In2art Gallery; **fireplace surround**, Ciot; **fireplace insert**, Hearth Manor/Town & Country. BOTTOM LEFT: A leggy console in the entryway anchors a framed photograph. **Artwork**, Elte; **console**, Cocoon Furnishings; **urns**, Pottery Barn; **green vase**, CB. BOTTOM RIGHT: Tableware in shades of indigo underscores the dining room's feature colour. **Cups, saucers**, Hermès; **blue vessels**, Indigo.

**ILLING IT ALL TOGETHER:** Behind the scenes at the PMH Showhouse.



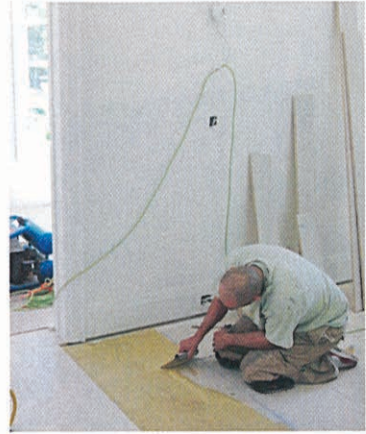
Months of planning on paper, the plans of the house finally go up, and we get to work fine-tuning the interior, favourite part of the process!



The house is abuzz with saws and drills as the construction crew and tradesmen move indoors to build the banisters, finish the trim and fit our custom pieces.



Our curb appeal goes way up when landscape architect Ron Holbrook and the team from Coivic Contracting plant some trees and start laying the walkways.



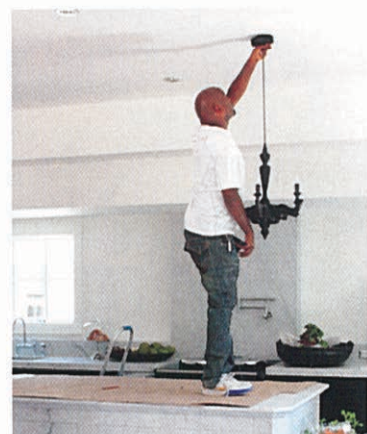
The flooring starts to go in and makes the house look so much lighter and more polished. It's exciting to see the space start to come to life.



Stairworks/Flourish Design Elements custom-made the newel post. It gets a lot of oohs and aahs when it goes in and is the architectural moment we hoped for.



Project interns Samantha Tibshirani and Diana Delory (not shown) made sure we received every item ordered from Ikea. Over 100 boxes!



We originally tried these black candelabra-style lights over the island before choosing the stainless steel pendant lights that hang there now.



H&H editor-in-chief Suzanne Dimma drops by to help out and ends up taking behind-the-scenes pictures for the magazine.



How many designers does it take to change a lightbulb? Designers Jenna Lieux (left) and Maia Roffey take care of the finishing details before photoshoot.



Our project manager, Antonio Bellusci, kept track of all the people, products and companies that made the showhouse possible. It's a big job.



The back hallway becomes a holding zone for furniture, lights and accessories that haven't yet made it to their designated rooms.



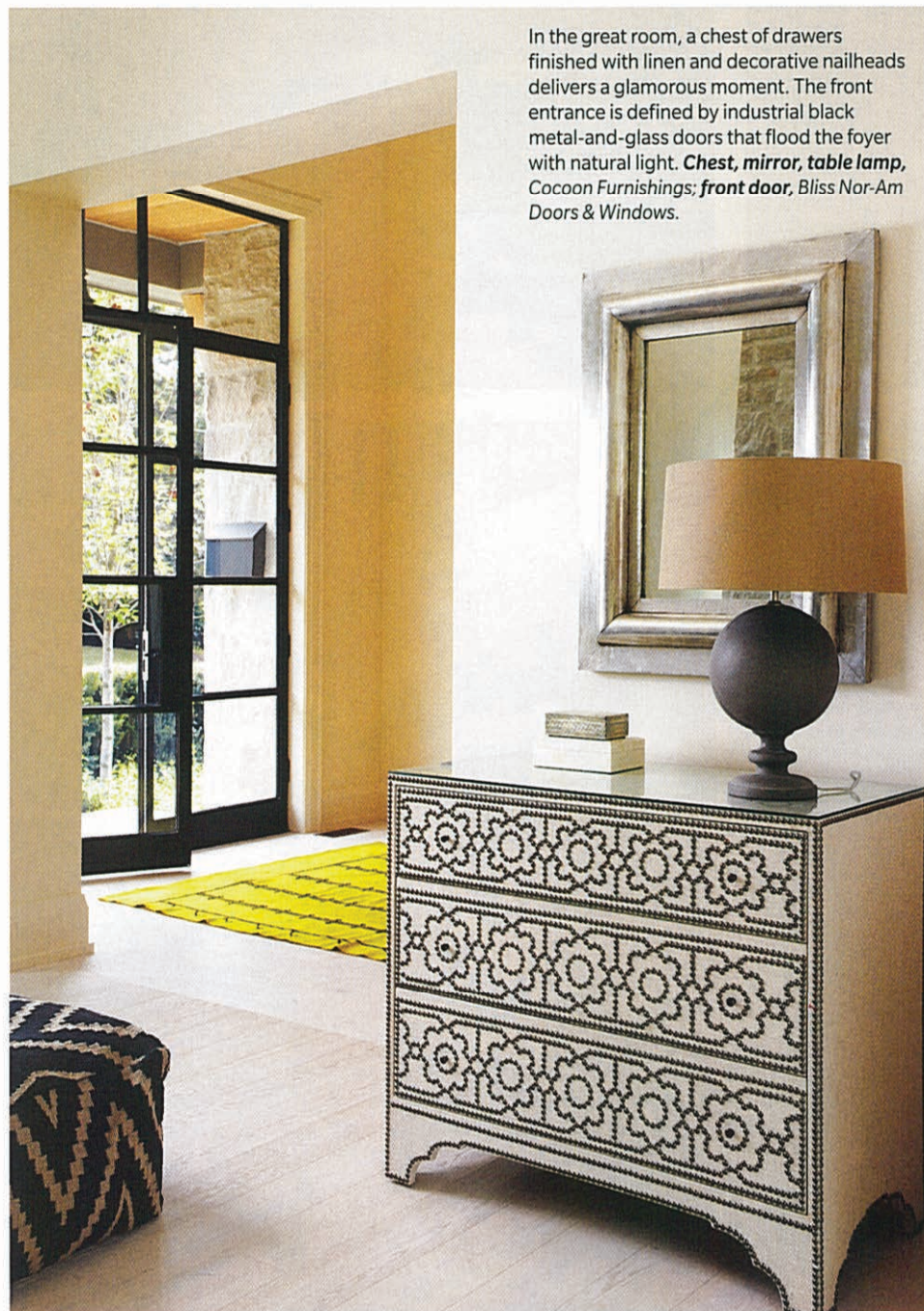
Shoot day is here! Photographer Michael Graydon makes sure Lynda is ready for her close-up.

**WEB** Find Lynda's video tours and more at [houseandhome.com/showhome](http://houseandhome.com/showhome)

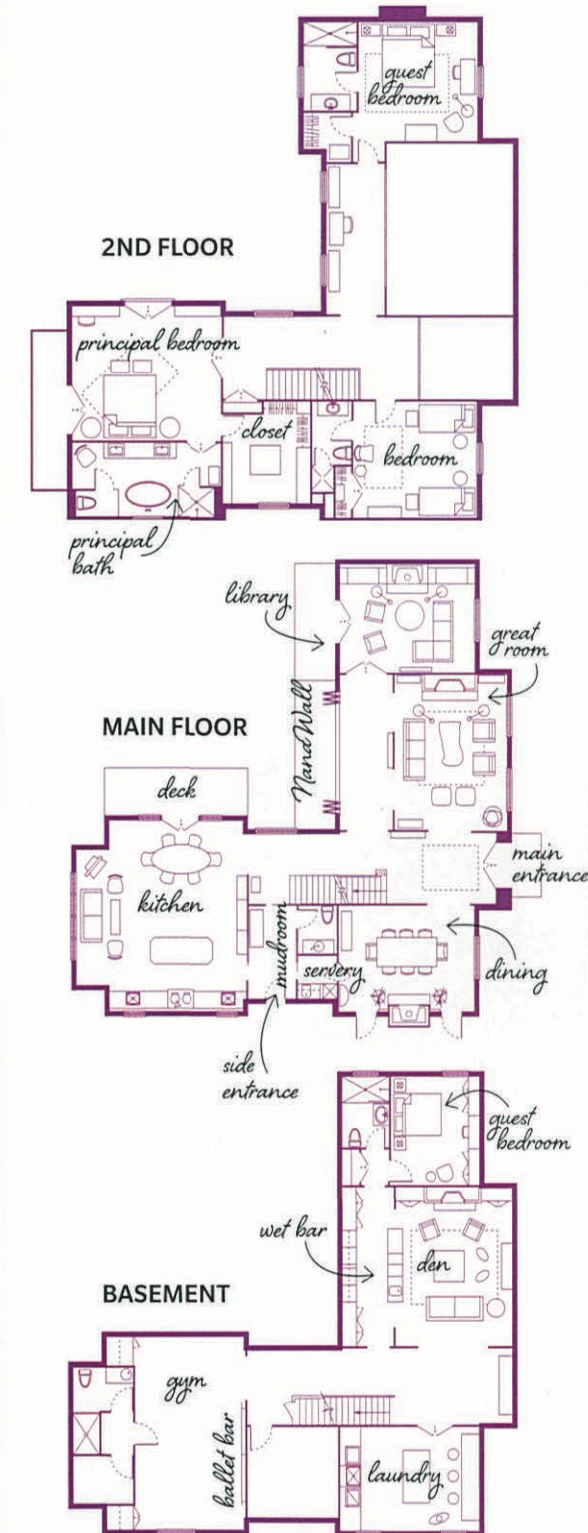


**FAR LEFT:** The house has a classic centre-hall layout, from which the great room opens up to the right and the dining room extends to the left. The kitchen is just beyond the main staircase. **Staircase construction,** Custom Stairs & Railing; **banister railing, posts,** Stairworks/Flourish Design Elements; **banister pickets,** Prestige Metal; **rug,** Elte; **console,** Cocoon Furnishings; **wall colour,** Antique White (1823), Behr.

**LEFT:** Walls painted a dazzling high-gloss green turn the powder room into a jewel box. The white lacquer-and-oak vanity was custom-made by Rettie Restoration. An ultraslim black faucet arches over the sculptural marble vessel sink and contrasts the mirror's boxy zinc frame. **Sink, drain,** Penmar Plumbing; **faucet,** Ginger's; **sconces,** Sescolite; **art** by Emilie Rondeau; **lighting,** In2art; **wall colour,** Churlish Green (251), Farrow & Ball.



In the great room, a chest of drawers finished with linen and decorative nailheads delivers a glamorous moment. The front entrance is defined by industrial black metal-and-glass doors that flood the foyer with natural light. **Chest, mirror, table lamp,** Cocoon Furnishings; **front door,** Bliss Nor-Am Doors & Windows.



Floor plan illustrations by Jenn Lawrence

Vaulted ceilings bring a spacious feel to the principal bedroom, while the slanted walls ensure it's cozy. Wicker stools used as nightstands, floor lamps on either side of the bed and a striped rug placed on an angle break away from the traditional bedroom setup for a fresh look. **Ralph Lauren bed, drum stools, artwork, Elizabeth Interiors; floor lamp, stools (at end of bed), Pottery Barn; rug, Elte; duvet, pillows, Home Outfitters; throw, Boo Boo & Lefty; drape fabric, Kravet; drape hardware, Dynamic Iron; wall colour, French Macaroon (CSP-335), Benjamin Moore.** OPPOSITE, TOP RIGHT: Limestone floor tiles finished with a natural edge bring

organic texture to the principal ensuite, while marble wall tiles define the tub and glassed-in shower. Classic shower and bath fixtures add traditional Euro style. **Tub, hammam towels, Ginger's; shutters, Canadian Superbilt Shutters; shower enclosure, Mirror Interiors; shower and tub fillers, Axor/Hansgrohe.** BOTTOM LEFT: The double vanity in the principal ensuite is topped with Crema Champagne limestone. Exquisite bone drawer pulls provide the finishing touch. **Vanity, Rettie Restoration; counter stone, Ciot; counter fabrication, York Fabrica; drawer pulls, South Hill Home; sconces, Restoration Hardware; faucets, sinks, Ginger's; mirrors, Elte.**



*"This year's house is what feels comfortable to me for a new home designed for an active family"*



Twin beds framed by tufted grey linen headboards flank the window in the third bedroom. Stump stools used as bedside tables add a rustic element, while a graphic chevron-print rug highlights the room's golden accents. **Headboard, Elizabeth Interiors; headboard and bedskirt fabric, Designer Fabrics; sheets, Au Lit; duvets, pillows, Home Outfitters; quilts, throws, stump stools, West Elm; floor lamps, clock, trunks, accent pillows, Pottery Barn; dresser, Ethan Allen; table lamp, HomeSense; rug, Elte.**



A seagrass rug, patterned drapes and layers of downy bedding create a luxe guest bedroom. **Bed, Elizabeth Interiors; duvets, pillows, Home Outfitters; duvet cover, Lucca; side tables, chandelier, floor lamp, Cocoon Furnishings; rug, Sullivan Source; table lamps, HomeSense; desk, Crate & Barrel; chair, Elte; drape fabric, Bilbrough & Co.**



ABOVE: The back deck holds a dining table and barbecue, and is accessible from the kitchen. In warmer weather, all four doors can be opened to create an indoor-outdoor cooking and dining zone. **Landscape architecture**, Ronald Holbrook & Associates Landscape Architects; **deck construction**, Coivic Contracting; **windows**, Dundas Woodwindows & Specialties; **outdoor furniture**, Fresh Home & Garden; **barbecue**, Home Hardware; **barn light**, Restoration Hardware.

RIGHT: The garage is outfitted with an epoxy floor and wall storage system by Onwall Solutions, as well as a potting station. **Garage construction**, PCM; **roof**, Vicwest; **siding**, Maibec Siding; **windows**, Dundas Woodwindows & Specialties; **garage door**, Abbey Overhead Doors; **potting bench**, Home Hardware.



## THANK YOU TO OUR SPONSORS

The 2012 showhouse would not have been possible without the generous support of the following people and companies. For a complete list of suppliers, please see Source Guide on page 222.

- 1212 Décor
- 1-800-GOT-JUNK
- Absolutely Inc.
- Aga Marvel
- All-Clad
- Amina Invisible Speakers
- Art Interiors
- Au Lit Fine Linens
- Beauti-Tone
- Behr
- Benjamin Moore
- The Big Stuff
- Bilbrough & Co.
- Bliss Nor-Am Doors & Windows
- Boo Boo & Lefty
- Bored Barn
- Brother
- CaesarStone
- California Closets
- Canadian Superbilt Shutters
- CB2
- Central Fairbank Lumber
- Cera Gres
- Ciot
- Cocoon Furnishings
- Coivic Contracting
- Crate & Barrel
- Designer Fabrics
- Distinctive Appliances
- Dundas Woodwindows & Specialties
- Dynamic Iron
- Elte
- Elizabeth Interiors
- Ethan Allen
- Farrow & Ball
- Fitness Depot
- Fresh Home & Garden
- Ginger's
- GM Exteriors
- Grange
- Hansgrohe
- Hearth Manor/Town & Country
- Hermès
- Highland Evergreen Supply
- Hollace Cluny
- Home Outfitters
- House Art
- Ikea
- Indigo and Chapters
- In2art Gallery
- Jamie Alexander
- Jenn-Air
- Kantelberg & Co.
- Kohler Canada
- Kravet and Lee Jofa
- Krups
- L'Atelier
- LeBert Fitness
- LG Appliances and Electronics
- Linksys
- Maibec Siding
- Maks Ironworks
- Marshall Mattress
- Mason's Masonry Supply
- Michael Black
- Michel Zelnik
- Mirror Interiors
- Mittmann Delivery
- Moncer Specialty Flooring
- Moscone Tile & Marble
- NanaWall Systems
- Murakami Design
- Flextherm
- Onwall Solutions
- Para Paints
- PEG
- PMF Plumbing Supplies
- Pottery Barn
- Prestige Metal
- Ciot
- Primavera Interior Furnishings
- PCM — Project and Construction Management
- Q Design
- Radiant Audio Design
- Reiko Caron
- Rettie Restoration
- Ronald Holbrook & Associates Landscape Architects
- Rowenta
- Roxul Insulation
- Ryan Louis
- Ryobi
- Saltillo Imports
- Scholtès
- Schuler
- Sescolite
- Sharp
- Shelter
- Sonos
- South Hill Home
- Speers Road Broadloom
- Stairworks/Flourish Design Elements
- Stacaro
- Stone Tile
- Union Electric
- UpCountry
- Upper Canada Specialty Hardware
- Vicwest
- West Elm
- York Fabrica



A striped rug brightens the basement seating area. Cabinets flanking the fireplace conceal hardworking components (left) and storage space (right). **Furniture, cabinets**, Ikea; **TV**, LG; **fireplace**, Hearth Manor/Town & Country; **mantel ledge**, Michael Black; **wall and trim colour**, River Rocks (P5224-34), Para Paints. **BOTTOM RIGHT**: Wood-look tile floors run through the basement. The washer and dryer are from LG. **Cabinets, shelves, pendant**, Ikea; **steamer, iron**, Rowenta; **wall and trim colour**, White Pointer (6K1-2), Beauti-Tone.

